



ශ්‍රී ලංකා ප්‍රජාතාන්ත්‍රික සමාජවාදී ජනරජයේ ගැසට් පත්‍රය

අති විශේෂ

The Gazette of the Democratic Socialist Republic of Sri Lanka

EXTRAORDINARY

අංක 2485/38 - 2026 අප්‍රේල් මස 22 වැනි බදාදා - 2026.04.22

No. 2485/38 - WEDNESDAY, APRIL 22, 2026

(Published by Authority)

PART I : SECTION (I) — GENERAL

Government Notifications

THE NATIONAL THOROUGHFARES ACT, No. 40 OF 2008

Order under Section 8

BY VIRTUE of the powers vested in me by section 8(1) of the National Thoroughfares Act, No. 40 of 2008, I, Bimal Niroshan Rathnayake, Minister of Transport, Highways and Urban Development do by this Order, declare the road specified in the Schedule to this Order, to be a National Highway.

BIMAL NIROSHAN RATHNAYAKE,
Minister of Transport, Highways and Urban Development.

Battaramulla,
20th April, 2026.

SCHEDULE

Name of Road

Section (km)

From

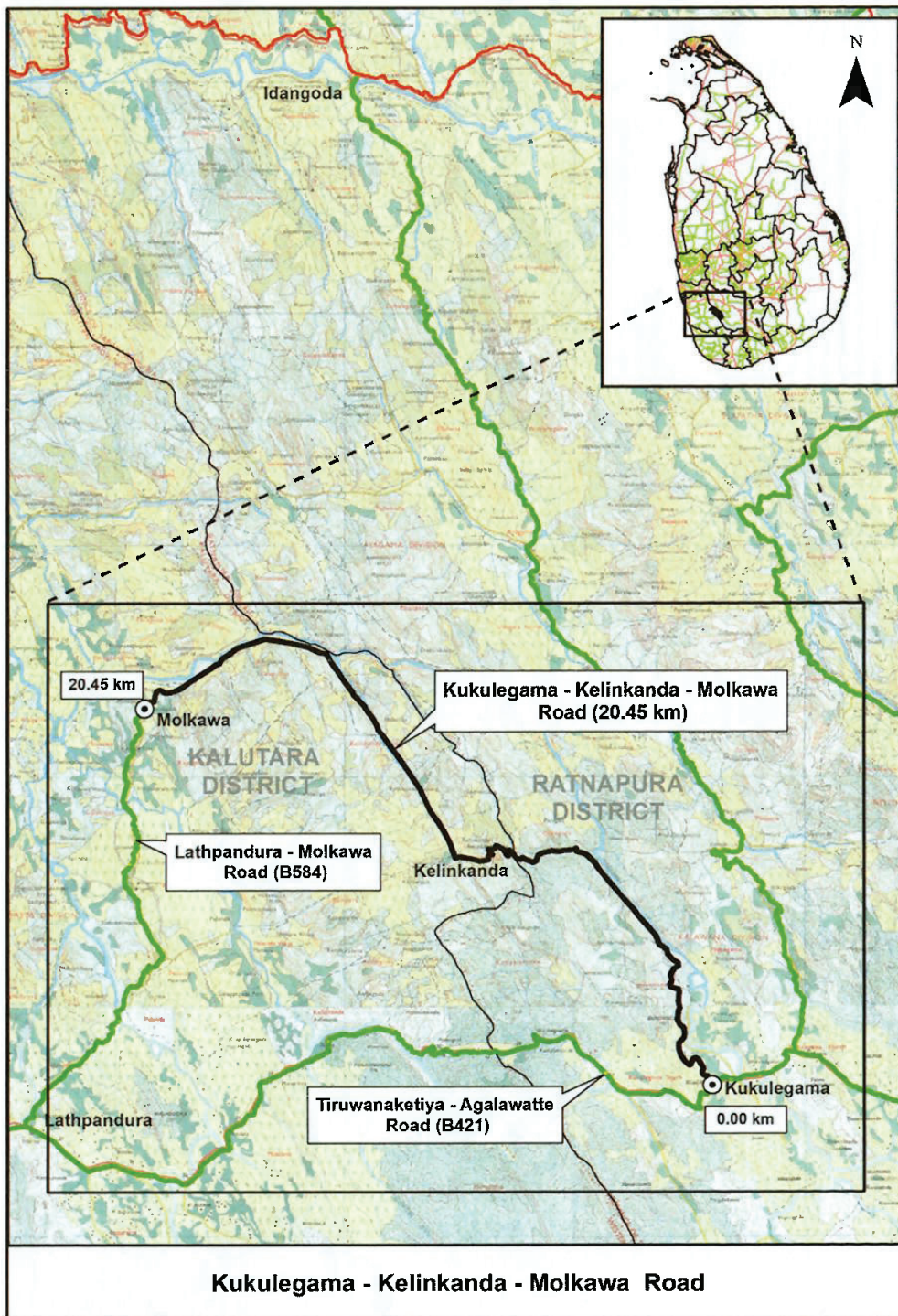
To

Western & Sabaragamuwa Province:

Kukulegama-Kelinkanda-Molkawa 0.000 (GPS 6.53280, 80.34843) 20.450 (GPS 6.60736, 80.23631)



- (i) Name of the road : Kukulegama-Kelinkanda-Molkawa road
- (ii) Total Length of the road : 20.450km
- (iii) Province : Western & Sabaragamuwa
- (iv) District : Colombo and Ratnapura
- (v) Plan specifying the land area :



(vi) Junctions on the road

	Name of the Junctions	Chainage At km	Type & Roads connected at the Junction			
			Right		Left	
			Type	Connecting to	Type	Connecting to
1	Kukulegama	0+000	NH	Thiruwanaketiya	NH	Agalawatte
2	Kelinkanda	7+450	CEB	-	-	Kelinkanda
Provincial Boundary* 8+350 Western/Sabaragamuwa Provincial Boundary						
3	Kelinkanda	9+550	-	-	PSR	Kelinkanda Janapadaya
4	Kukuleganga Power Station	12+930	CEB	Power Station	-	-
5	Army Camp	14+750	ARMY	Army Camp	-	-
6	Walakada	18+240	-	-	PSR	Walakada
7	Molkawa	20+450	PC	Bulathsinhala	-	-

Type :- NH = National Highway, PC = Provincial Council Road, PRS = Pradeshiya Sabha Road, CEB = Ceylon Electricity Board road

*Location where the road starting from Western Province pass across Western / Sabaragamuwa Provincial Boundary.

(vii) Road Components :-

A) Culverts

Type of Culverts	No.
Box	12
Hume pipe	20

B) Bridges

Bridges No.	Chainage at km	River/ Stream Name	Length (m)	Type	Carriage way width (m)
8/1	7+650		-	Concrete Bridge	-
10/1	9+350		-	Causeway	-
11/1	10+100		-	Causeway	-
11/2	10+450		-	Causeway	-
13/1	12+350		-	Causeway	-
14/1	13+150		17.80	Concrete	6.20
17/1	16+350		15.20	Concrete	6.00
20/1	19+700		17.70	Concrete	6.80

(viii) Length of the National Highway : 20.450Km

(ix) Building Limit alongside a National Highway : Fifteen Metres (15.00m) from the Centre of the carriageway of the National Highway.