



ශ්‍රී ලංකා ප්‍රජාතාන්ත්‍රික සමාජවාදී ජනරජයේ ගැසට් පත්‍රය

අති විශේෂ

The Gazette of the Democratic Socialist Republic of Sri Lanka  
EXTRAORDINARY

අංක 2309/52 - 2022 දෙසැම්බර් මස 10 වැනි සෙනසුරාදා - 2022.12.10  
No. 2309/52 - SATURDAY, DECEMBER 10, 2022

(Published by Authority)

**PART I : SECTION (I) — GENERAL**

**Government Notifications**

**FOREST CONSERVATION ORDINANCE**

THE order under Section 4(2) that has to be read with Section 64 (1) of the Forest Conservation Ordinance (Chapter 451), as Act, No. 13 of 1996, as amended by Act, No. 56 of 1979, No. 13 of 1982, No. 84 of 1988, No. 23 of 1995 and No. 65 of 2009.

**The Order**

By virtue of powers vested in me by Section 4(2) of the Forest Conservation Ordinance (Chapter 451) as amended by Acts, No. 13 of 1966, No. 56 of 1979, No. 13 of 1982, No. 84 of 1988, No. 23 of 1995 and No. 65 of 2009, I, Amaraweera Mahinda, Minister of Wildlife & Forest Resources Conservation do by this Order release Wakaneri Reserved Forest of the extent 395.1 hectares and bounded by the limits set forth in the Schedule 1, 2, 3, 4 and 5 and was declared as a Reserved Forest by the *Gazette Extraordinary* No. 1820/28 dated 26th July, 2013, from the Reserved Forest State from 06th day of December, 2022.

**AMARAWEEERA MAHINDA,**  
Minister of Wildlife & Forest Resources Conservation.

Ministry of Wildlife & Forest Resources Conservation,  
Rajagiriya,  
06th day of December, 2022.



## SCHEDULE 01

The state land of 89.4 hectares located within Koralaipattu South Divisional Secretary Division of Batticaloa District in the Eastern Province of Sri Lanka located within the area depicted by the following geodesic coordinates (Survey method - Geodesic coordinates EPSG : 5234 method).

<i>Serial Number</i>	<i>Eastern Coordinates</i>	<i>Northern Coordinates</i>	<i>Serial Number</i>	<i>Eastern Coordinates</i>	<i>Northern Coordinates</i>
1	274547	304446	30	276093	304137
2	274575	304490	31	276120	304121
3	274587	304532	32	276154	304125
4	274633	304606	33	276193	304123
5	274686	304691	34	276198	304067
6	274876	304508	35	276273	304045
7	275040	304352	36	276277	303972
8	275243	304151	37	276311	303969
9	275317	304144	38	276317	304023
10	275403	304136	39	276370	304114
11	275451	303946	40	276374	304206
12	275561	303924	41	276347	304276
13	275641	303933	42	276351	304397
14	275736	303995	43	276489	304376
15	275733	304101	44	276575	304354
16	275699	304122	45	276633	304381
17	275624	304185	46	276625	304454
18	275610	304258	47	276631	304515
19	275648	304370	48	276694	304533
20	275687	304425	49	276762	304511
21	275861	304409	50	276568	304256
22	275980	304473	51	276360	303978
23	276101	304466	52	276148	303700
24	276139	304375	53	275890	303360
25	276149	304324	54	275622	303577
26	276147	304271	55	275264	303873
27	276133	304229	56	275024	304069
28	276116	304192	57	274776	304264
29	276086	304158			

The land area surrounded by the straight lines formed by joining the points that start from (E. 274547, N. 304446) up to (E. 274776, N. 304264) and from there up starting point (E. 274547, N. 304446)

**Extent - 89.4 hectares.**

SCHEDULE 02

The state land of 234.4 hectares located within Koralaipattu West Divisional Secretary Division of Batticaloa District in the Eastern Province of Sri Lanka located within the area depicted by the following geodesic coordinates (Survey method - Geodesic coordinates EPSG : 5234 method).

<i>Serial Number</i>	<i>Eastern Coordinates</i>	<i>Northern Coordinates</i>
1	276855	304474
2	277309	304442
3	277641	304420
4	277660	304341
5	277969	304343
6	278341	304345
7	278487	303911
8	278666	303364
9	278609	302712
10	278558	302123
11	277963	302394
12	278015	302641
13	278121	303142
14	278174	303392
15	277895	303919
16	277492	303361
17	277572	302977
18	277647	302611
19	277265	302200
20	277187	302288
21	276803	302717
22	276877	303312
23	277207	303504
24	277504	303896
25	277339	304 189
26	277272	304307

The land area surrounded by the straight lines formed by joining the points that start from (E. 276855, N. 304474) up to (E. 27272, N. 303074) and from there up starting point (E. 276855, N. 304474)

**Extent - 234.4 hectares.**

SCHEDULE 03

The state land of 9 hectares located within Koralaipattu South Divisional Secretary Division of Batticaloa District in the Eastern Province of Sri Lanka located within the area depicted by the following geodesic coordinates (Survey method - Geodesic coordinates EPSG : 5234 method).

<i>Serial Number</i>	<i>Eastern Coordinates</i>	<i>Northern Coordinates</i>
1	274067	304440
2	274113	304425
3	274197	304395
4	274224	304203
5	274352	304194
6	274472	304312
7	274446	304079
8	274154	304148
9	273888	304214
10	273901	304231
11	274025	304387

The land area surrounded by the straight lines formed by joining the points that start from (E. 274067, N. 304440) up to (E. 274025, N. 304387) and from there up starting point (E. 274067, N. 304440).

**Extent - 9 hectares.**

SCHEDULE 04

The state land of 15.7 hectares located within Koralaipattu North Divisional Secretary Division of Batticaloa District in the Eastern Province of Sri Lanka located within the area depicted by the following geodesic coordinates (Survey method - Geodesic coordinates EPSG : 5234 method).

<i>Serial Number</i>	<i>Eastern Coordinates</i>	<i>Northern Coordinates</i>
1	278753	307467
2	278957	307351
3	279221	307202
4	279056	306979
5	278834	306684
6	278660	306781
7	278870	306837
8	278922	306913
9	278954	307006
10	278907	307080
11	278794	307185
12	278720	307309
13	278710	307389

The land area surrounded by the straight lines formed by joining the points that start from (E. 278753, N. 307467) up to (E. 278710, N. 307389) and from there up starting point (E. 278753, N. 307467).

**Extent - 15.7 hectares.**

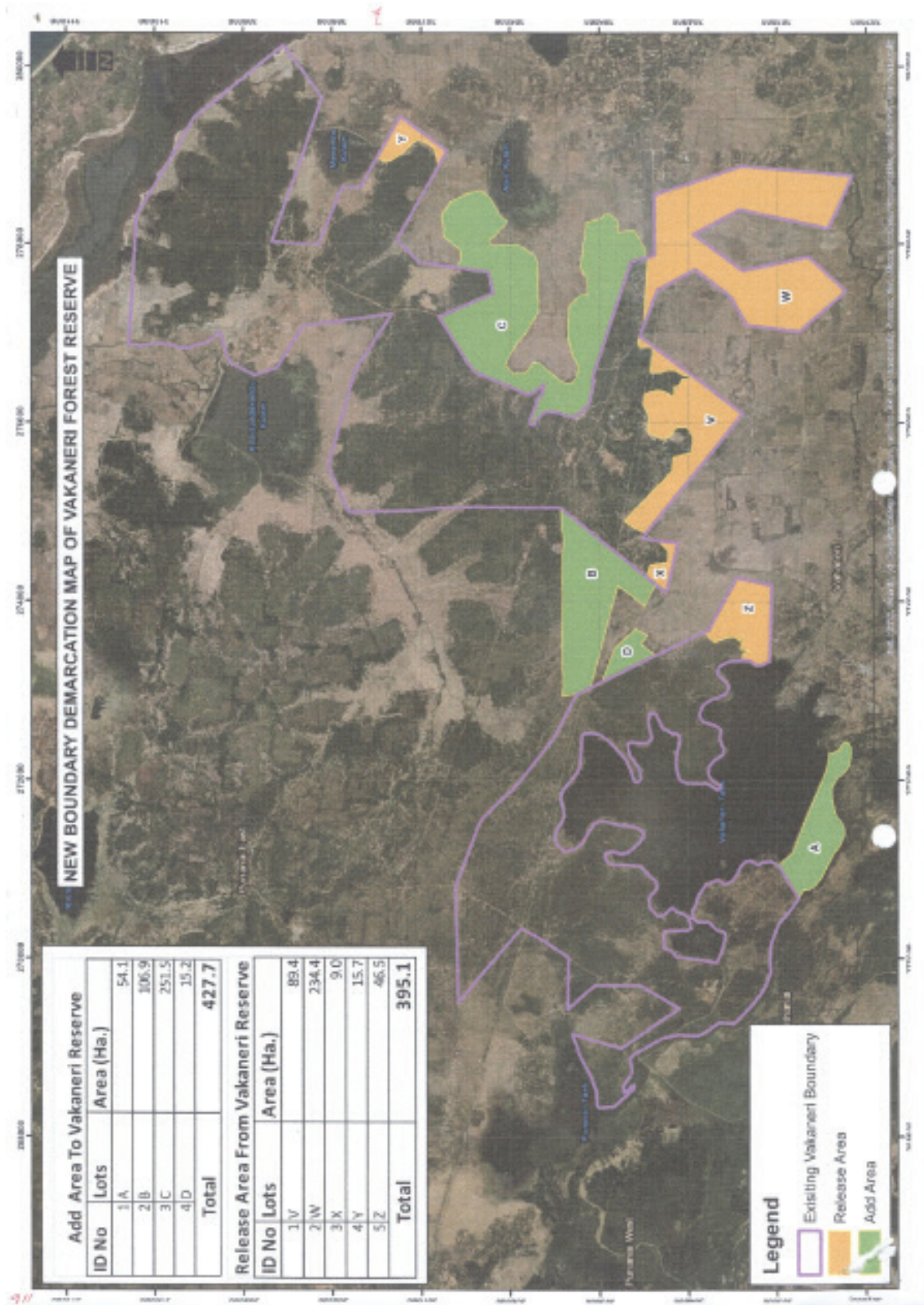
## SCHEDULE 05

The state land of 46.5 hectares located within Koralaipattu South Divisional Secretary Division of Batticaloa District in the Eastern Province of Sri Lanka located within the area depicted by the following geodesic coordinates (Survey method - Geodesic coordinates EPSG : 5234 method).

<i>Serial Number</i>	<i>Eastern Coordinates</i>	<i>Northern Coordinates</i>
1	273431	303822
2	273465	303751
3	273637	303657
4	273870	303530
5	274054	303427
6	274010	303210
7	273967	303030
8	273703	303036
9	273494	303041
10	273282	303046
11	273113	303052
12	273073	303158
13	273083	303235
14	273120	303282
15	273123	303367
16	273194	303365
17	273217	303338
18	273227	303273
19	273247	303336
20	273250	303377
21	273250	303392
22	273342	303367
23	273383	303347
24	273404	303354
25	273338	303402
26	273382	303440
27	273388	303524
28	273370	303577
29	273325	303679
30	273386	303752
31	273425	303769

The land area surrounded by the straight lines formed by joining the points that start from (E. 273431, N. 303822) up to (E. 273425, N. 303769) and from there up starting point (E. 273431, N. 303822).

**Extent - 46.5 hectares.**



## FOREST CONSERVATION ORDINANCE

THE order under Section 3 of the Forest Conservation Ordinance (Chapter 451), as amended by Act, No. 13 of 1996 (Reprint), No. 56 of 1979, No. 13 of 1982, No. 84 of 1988, No. 23 of 1995 and No. 65 of 2009.

### The Order

By virtue of powers vested in me by Section 3 of the Forest Conservation Ordinance (Chapter 451) as amended by Acts, No. 13 of 1996 (Reprint), No. 56 of 1979, No. 13 of 1982, No. 84 of 1988, No. 23 of 1995 and No. 65 of 2009, I, Amara-weera Mahinda, Minister of Wildlife & Forest Resources Conservation do by this Order declare the Wakaneri Forest of 427.7 hectares bounded by the limit set forth in the Schedules 1, 2, 3 and 4 hereto as Wakaneri Reserved Forest from 06th day of December, 2022.

**AMARAWEEERA MAHINDA,**  
Minister of Wildlife & Forest Resources Conservation.

Ministry of Wildlife & Forest Resources Conservation,  
Rajagiriya,  
06th day of December, 2022.

### SCHEDULE 01

The state land of 54.1 hectares located within Koralaipattu South Divisional Secretary Division of Batticaloa District in the Eastern Province of Sri Lanka located within the area depicted by the following geodesic coordinates (Survey method - Geodesic coordinates EPSG : 5234 method).

<i>Serial Number</i>	<i>Eastern Coordinates</i>	<i>Northern Coordinates</i>	<i>Serial Number</i>	<i>Eastern Coordinates</i>	<i>Northern Coordinates</i>
1	270460	302729	21	271821	302286
2	270837	302959	22	271791	302312
3	270872	302906	23	271709	302355
4	270971	302798	24	271629	302363
5	271156	302728	25	271552	302350
6	271361	302645	26	271444	302328
7	271615	302540	27	271388	302309
8	271907	302415	28	271344	302271
9	272085	302386	29	271288	302236
10	272096	302350	30	271228	302213
11	272118	302286	31	271182	302215
12	272167	302259	32	271140	302224
13	272207	302212	33	271120	302239
14	272207	302167	34	271048	302271
15	272153	302144	35	270986	302325
16	272093	302142	36	270699	302469
17	272014	302150	37	270593	302548
18	271944	302163	38	270563	302602
19	271899	302191	39	270553	302672
20	271845	302250			

The land area surrounded by the straight lines formed by joining the points that start from (E. 270460, N. 302729) up to (E. 270553, N. 302672) and from there up starting point (E. 270460, N. 302729).

**Extent - 54.1 hectares.**



SCHEDULE 02

The state land of 106.9 hectares located within Koralaipattu North Divisional Secretary Division of Batticaloa District in the Eastern Province of Sri Lanka located within the area depicted by the following geodesic coordinates (Survey method - Geodesic coordinates EPSG : 5234 method).

<i>Serial Number</i>	<i>Eastern Coordinates</i>	<i>Northern Coordinates</i>	<i>Serial Number</i>	<i>Eastern Coordinates</i>	<i>Northern Coordinates</i>
1	272734	305400	30	274566	305391
2	272746	305397	31	274595	305396
3	272773	305393	32	274632	305403
4	272805	305388	33	274674	305403
5	272845	305385	34	274696	305402
6	272877	305385	35	274712	305401
7	272936	305385	36	274730	305401
8	273005	305388	37	274748	305402
9	273043	305391	38	274762	305403
10	273096	305391	39	274776	305405
11	273204	305392	40	274795	305408
12	273321	305401	41	274804	305408
13	273466	305396	42	274820	305408
14	273536	305390	43	274832	305405
15	273605	305391	44	274544	305038
16	273669	305394	45	274293	304717
17	273761	305390	46	274067	304440
18	273851	305388	47	274025	304387
19	273914	305391	48	273982	304335
20	273977	305394	49	273785	304432
21	274033	305393	50	273749	304451
22	274109	305390	51	273732	304460
23	274133	305391	52	273867	304632
24	274203	305391	53	273886	304657
25	274285	305391	54	273962	304767
26	274338	305390	55	273531	304883
27	274428	305375	56	273158	304986
28	274484	305379	57	272823	305073
29	274525	305383	58	272745	305235

The land area surrounded by the straight lines formed by joining the points that start from (E. 272734, N. 305400) up to (E. 272745, N. 305235) and from there up starting point (E. 272734, N. 305400).

**Extent - 106.9 hectares.**

## SCHEDULE 03

The state land of 251.5 hectares located within Koralaipattu North Divisional Secretary Division of Batticaloa District in the Eastern Province of Sri Lanka located within the area depicted by the following geodesic coordinates (Survey method - Geodesic coordinates EPSG : 5234 method).

<i>Serial Number</i>	<i>Eastern Coordinates</i>	<i>Northern Coordinates</i>	<i>Serial Number</i>	<i>Eastern Coordinates</i>	<i>Northern Coordinates</i>
1	276100	305761	35	277781	306192
2	276221	306049	36	277765	306102
3	276349	306362	37	277784	306041
4	276457	306453	38	277778	305965
5	276687	306597	39	277778	305883
6	276971	306779	40	277744	305815
7	277114	306466	41	277694	305746
8	277250	306162	42	277679	305706
9	277477	306214	43	277589	305657
10	277524	306571	44	277440	305655
11	277562	306556	45	277310	305663
12	277615	306524	46	277190	305656
13	277680	306529	47	277117	305650
14	277728	306537	48	277018	305654
15	277753	306581	49	276928	305713
16	277789	306622	50	276863	305746
17	277839	306689	51	276785	305795
18	277871	306727	52	276745	305832
19	278003	306729	53	276684	305891
20	278072	306750	54	276588	305942
21	278131	306736	SS	276497	305994
22	278259	306648	56	276428	306019
23	278356	306437	57	276338	305929
24	278371	306359	58	276332	305832
25	278371	306279	59	276368	305775
26	278327	306216	60	276458	305712
27	278268	306170	61	276450	305634
28	278191	306125	62	276337	305505
29	278117	306089	63	276251	305409
30	278042	306001	64	276215	305301
31	277998	306020	65	276301	305230
32	277939	306087	66	276369	305213
33	277863	306148	67	276429	305213
34	277823	306207	68	276509	305266

SCHEDULE 03 (Contd.)

<i>Serial Number</i>	<i>Eastern Coordinates</i>	<i>Northern Coordinates</i>
69	276656	305306
70	276727	305327
71	276906	305330
72	277034	305317
73	277097	305309
74	277162	305250
75	277221	305198
76	277221	305136
77	277231	305103
78	277317	305101
79	277422	305114
80	277452	305156
81	277542	305192
82	277628	305173
83	277760	305156
84	277911	305136
85	278031	305127
86	278069	304953
87	278115	304915
88	278126	304885
89	278107	304822
90	278078	304786
91	278023	304755
92	277929	304765
93	277922	304736
94	277941	304630
95	277941	304571
96	277721	304444
97	277635	304445
98	277594	304610
99	277023	304805
100	276604	304951
101	276289	305051
102	276239	305040

The land area surrounded by the straight lines formed by joining the points that start from (E. 276100, N. 305761) up to (E. 276117, N. 305722) and from there up starting point (E. 276100, N. 305761).

**Extent - 251.5 hectares.**

SCHEDULE 04

The state land of 15.2 hectares located within Koralaipattu South Divisional Secretary Division of Batticaloa District in the Eastern Province of Sri Lanka located within the area depicted by the following geodestic coordinates (Survey method - Geodesic coordinates EPSG : 5234 method).

<i>Serial Number</i>	<i>Eastern Coordinates</i>	<i>Northern Coordinates</i>
1	272883	304948
2	273263	304793
3	273362	304693
4	273482	304558
5	273404	304427
6	273302	304497
7	273185	304328
8	273130	304440
9	273073	304558
10	272984	304741
11	272923	304867
12	272904	304905
13	272894	304926

The land area surrounded by the straight lines formed by joining the points that start from (E. 272883, N. 304948) up to (E. 272894, N. 304926) and from there up starting point (E. 272883, N. 304926).

**Extent - 15.2 hectares.**

**FOREST CONSERVATION ORDINANCE**

**Notification**

BY virtue of powers vested in me by Section 63 of the Forest Conservation Ordinance (Chapter 451) as amended by Acts, No. 13 of 1966 (Reprint), No. 56 of 1979, No. 13 of 1982, No. 84 of 1988, No. 23 of 1995 and No. 65 of 2009, I, do by this notification notify that the Wakaneri Reserved Forest mentioned in the above order is subjected to the single control of the Conservator General of Forests.

**AMARAWEEERA MAHINDA,**  
Minister of Wildlife & Forest Resources Conservation.

Ministry of Wildlife & Forest Resources Conservation,  
Rajagiriya,  
06th day of December, 2022.

EOG 12 - 117